



# CO.

PROFILE



## INTRODUCTION

Horizons was formed in July 2010. We have 10 years experience within rubber lining, conveyor belt splicing, alumina ceramic tiling, corrosion control and servicing many clients within the mining industries.

## OUR HISTORY

2010 Founded the company and served many mines and quarries across Botswana.

2013 We started to expand our business we completed big project in Discovery Metals Limited mine in Maun doing rubber lining, sand blasting, ceramic tiling until the mine was liquidated and reopened Khoemacau mine.

2014 We started to rubber line, sand blast, and conveyor splicing at Botswana Ash Mine for every year shutdown. We are also engaged in Morupule B, Morupule Colliery, Mupane Mine, Mowana Mine, Lerala Diamond Mine, Lucara Mine doing splicing, rubber lining, sand blasting, painting, ceramic tiling.

2015 Horizons was awarded a two-year contract at Tati Nickel Mine for rubber lining, alumina ceramic tiling, sandblasting, painting and conveyor splicing.

## OUR FACTORY

Our factory is located in Francistown Dumela Heavy Industrial. It covers 300m<sup>2</sup> workshop. The workshop has advanced equipments for sandblasting, painting, conveyor belts, rubber lining. We adhere to the quality and safety with our experienced technical staff.

## OUR CORPORATE PHILOSOPHY

### OUR VISION

To provide engineered services of high standard for our valuable customers and outstanding performance.

---

### OUR MISSION

To build long relation with our customers and provide exceptional customers services by pursuing business through innovation and advanced technology.

---

### SAFETY

We are committed to the policy on environment ,health , safety, quality policy and ehsq compliance is an inherent part of our business planning strategies and operational objectives .Implementation of ehsq management system is strictly adhered and promoted in cooperation with our employees.

We have a **qualified mechanical engineer** holding a degree and **safety health officer** holding digree certificate

---

### HIV/AIDS POLICY

The company is in line with national HIV/AIDS policies practices, well informed and updated HIV programmes that covers the following policies.

It encourages voluntary testing and counselling to all its employees.

It discourages discrimination for people living with HIV/AIDS

It periodically extends invitation to medical experts to improve information on mental issues of HIV (clinical meeting on HIV)

Makes readily available information on availability on drugs(ARVS)

Encourages staff to be on medical aid.

## OUR SERVICES



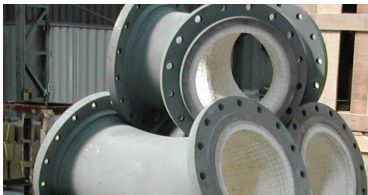
RUBBER  
LINING



CORROSION  
CONTROL



CONVEYOR  
SPLICING



ALUMINA CERAMIC  
TILING



CONVEYOR  
STRUCTURE



MILL  
RELINING

VALVE AND  
PUMP REPAIRS



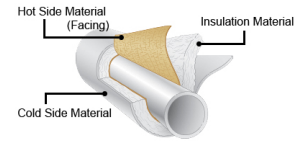
## OUR SERVICES



REFRACTORY



ROOFING



HOT AND COLD INSULATION



MECHANICAL ENGINEERING



LABOUR HIRE



FABRICATION

HDPE PIPE INSTALLATION



## EQUIPMENTS WE SUPPLY



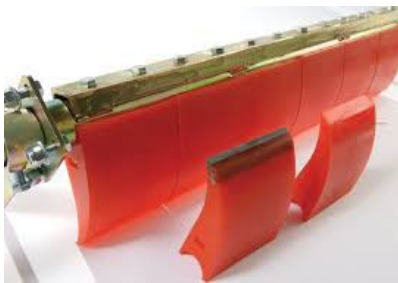
BUTTERFLY  
VALVES



DEWATERING  
SCREENS



MAGNETIC  
SEPARATOR



BELT  
SCRAPPERS



BEARINGS



VEE  
BELTS

## EQUIPMENTS WE SUPPLY



GEAR  
BOXES



BOLTS  
AND NUTS



IDLER  
ROLLERS



LUBREX  
OIL



MILL  
LINERS



CONVEYOR  
BELTS



P O BOX 301040  
Francistown  
Botswana

PHONE:+267 71 636 533  
+267 75 274 746  
+267240 2002

WEBSITE:[www.horizons.co.bw](http://www.horizons.co.bw)